



“Empowering Your Vision”



User's Manual

IMPORTANT SAFETY INSTRUCTIONS

READ THESE INSTRUCTIONS

KEEP THESE INSTRUCTIONS

CLEAN WITH A DRY SOFT CLOTH

DO NOT WALK OR DRIVE WITH THE

E2 BY NUEYES

DO NOT EXPOSE INTERIOR LENSES TO
SUNLIGHT FOR EXTENDED PERIODS OF
TIME

CHARGE YOUR BATTERY BEFORE USE

What's Included

CAREFULLY UNPACK AND CONFIRM THE FOLLOWING PARTS ARE INCLUDED



← Your e2 Device

← Cleaning Cloth

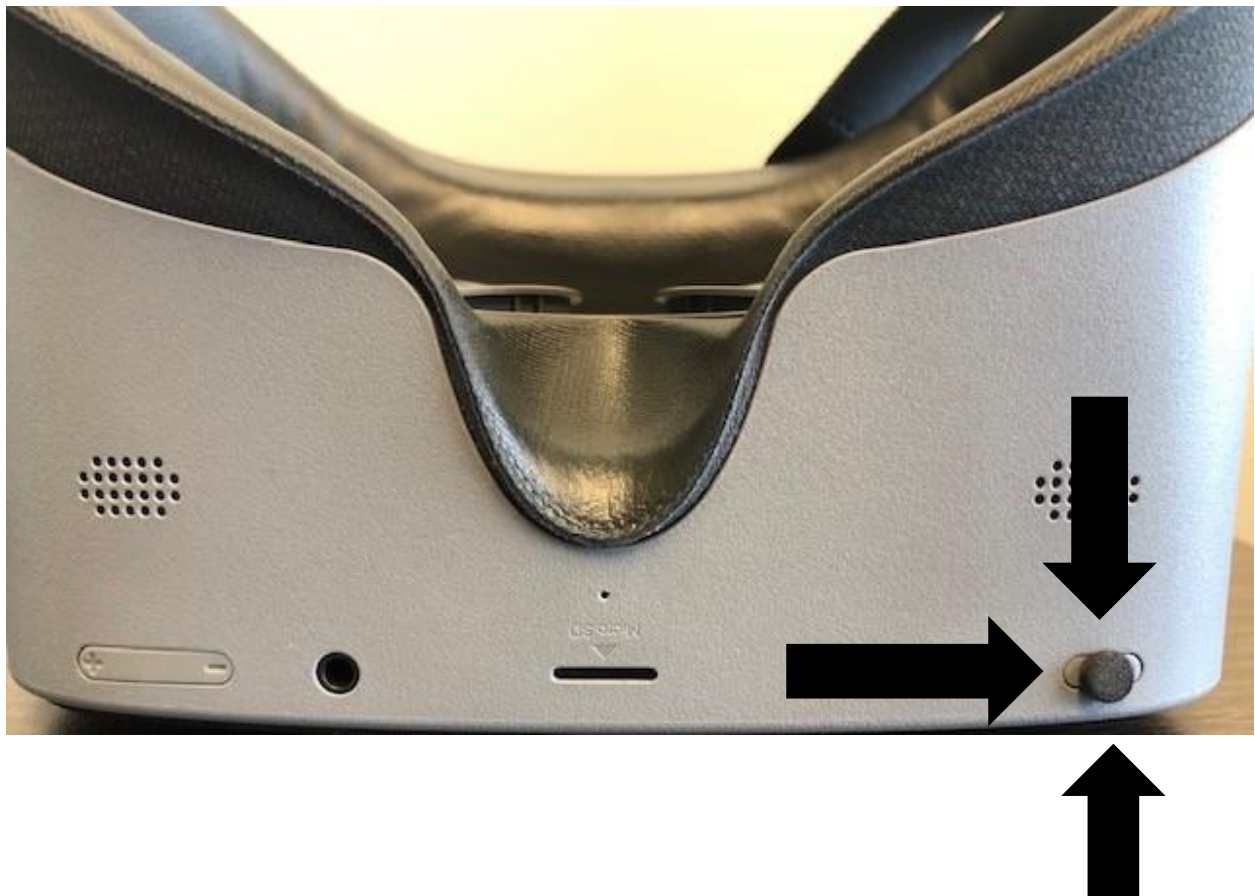
← Block Charger

← Charging Cord

↑
Remote Control (see instructions)

How to Put On Your e2 For Maximum Clarity And Comfort

1. Please turn on your e2 by pressing the power button on the below right-hand side of the product
*PLEASE NOTE OUR APPLICATION WILL TAKE 10 SECONDS TO LOAD.
DO NOT PRESS ANY BUTTONS



2. Align the lenses/screen to your eyes



3. Once aligned gently place the strap over your head



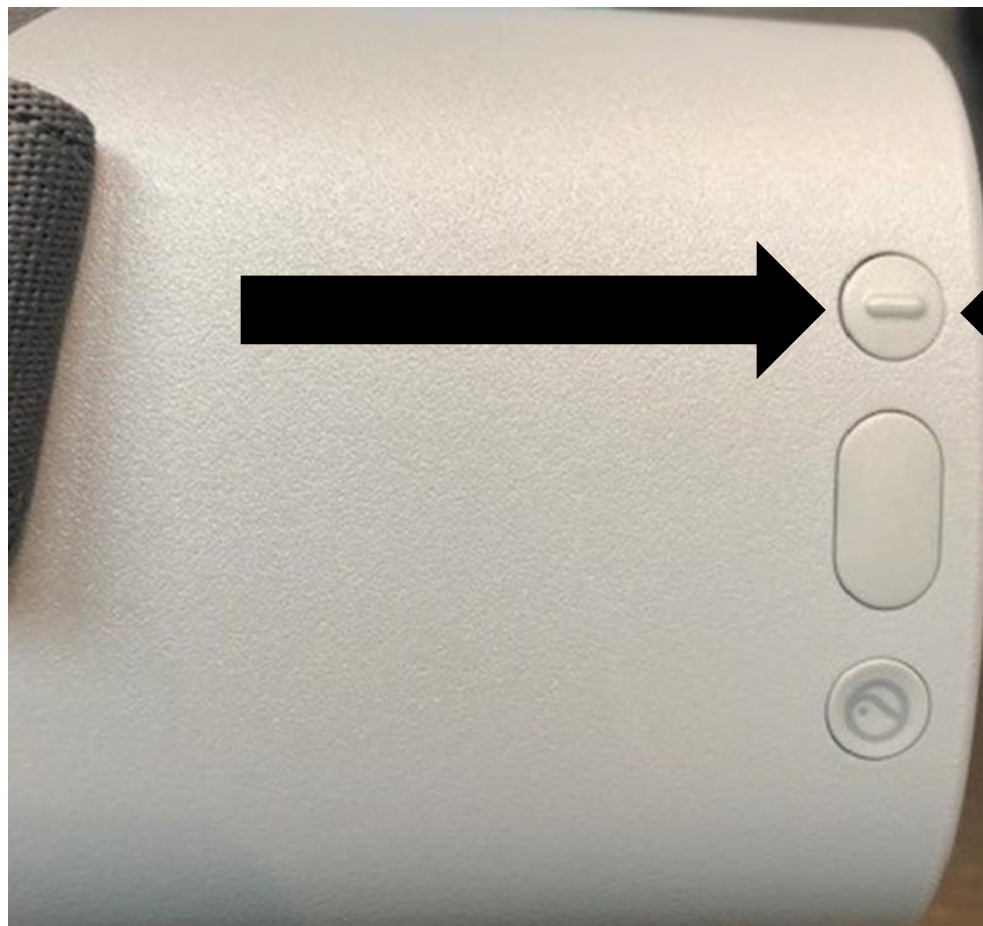
4. Once strap is on your head, adjust the side straps tighter or looser for maximum comfort and clarity



*****PLEASE NOTE IF THE IMAGE DOES NOT LOOK CLEAR TO YOU ADJUST THE e2 UP OR DOWN ON YOUR FACE*****

Magnifying with Your e2

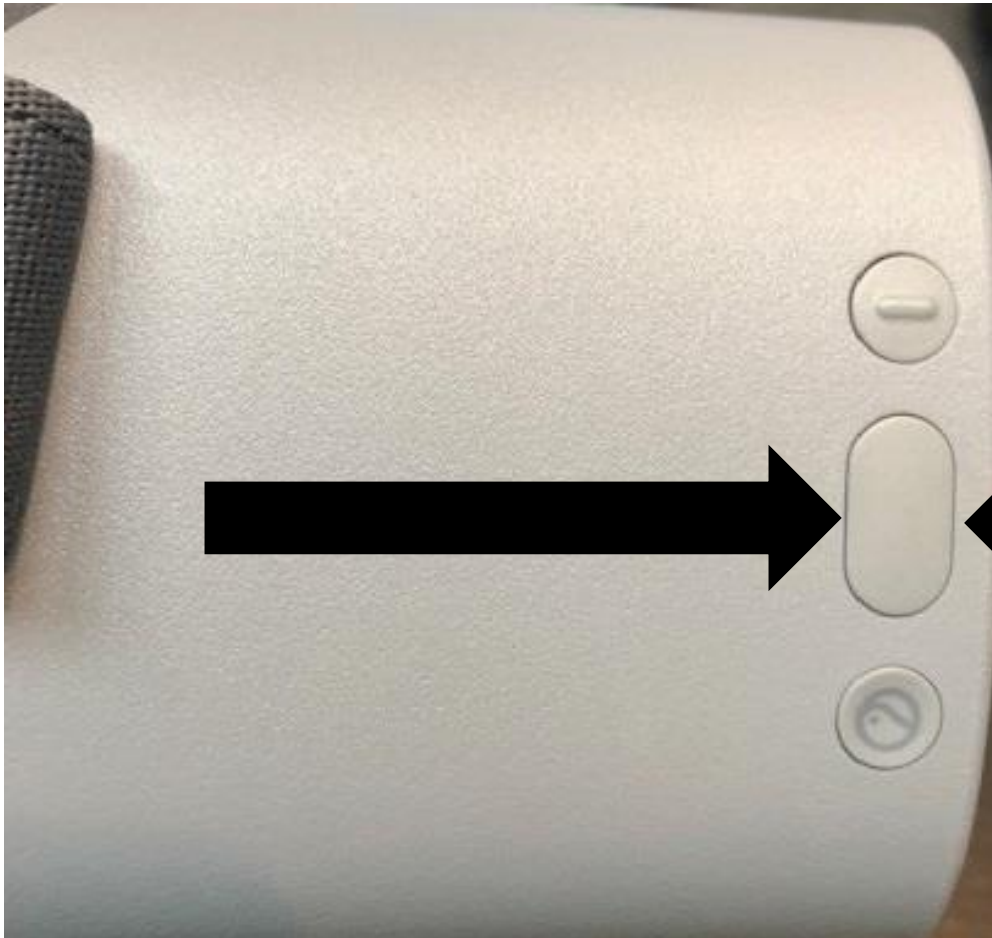
1. To increase or decrease magnification, simply press the top button on the right-hand side of your e2 (see picture below)



2. When you reach the maximum 18x of magnification an icon displaying **MAX** will appear.
3. Continue pressing the magnification button to decrease.
4. Once at 2x of magnification an icon will appear displaying the word **MIN**

Changing Contrast with Your e2

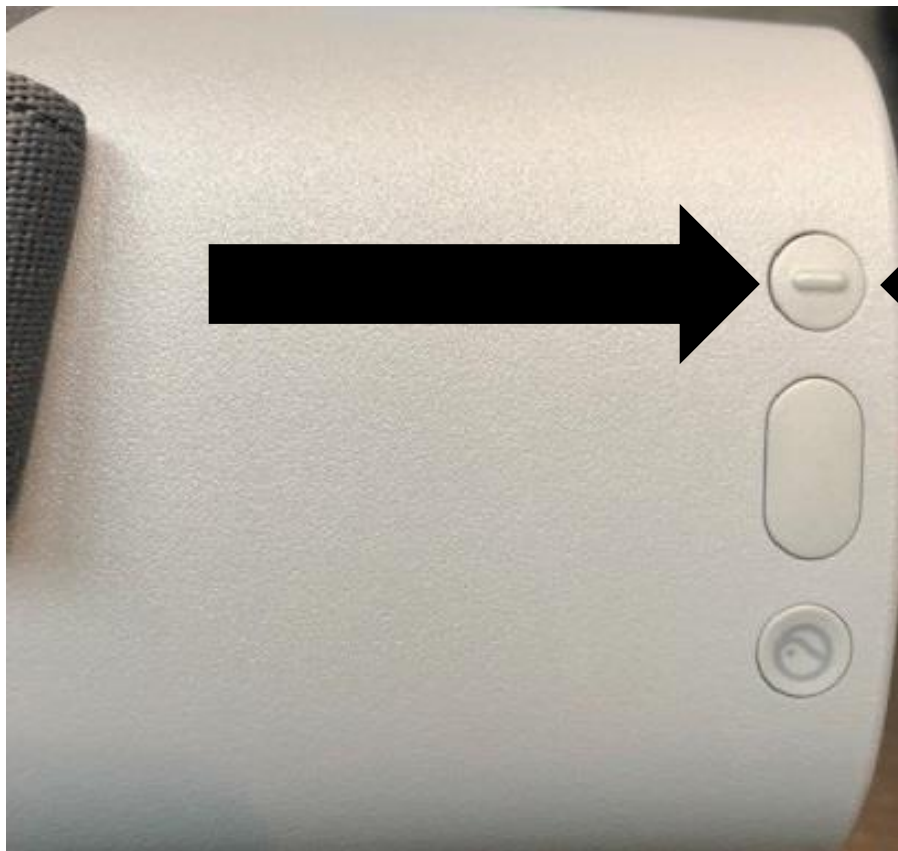
1. To change contrast: Press the middle button on the right-hand side of your e2. The contrasts will cycle through.



- Press 1x Black on White
- Press 2x White on Black
- Press 3 x Normal Video

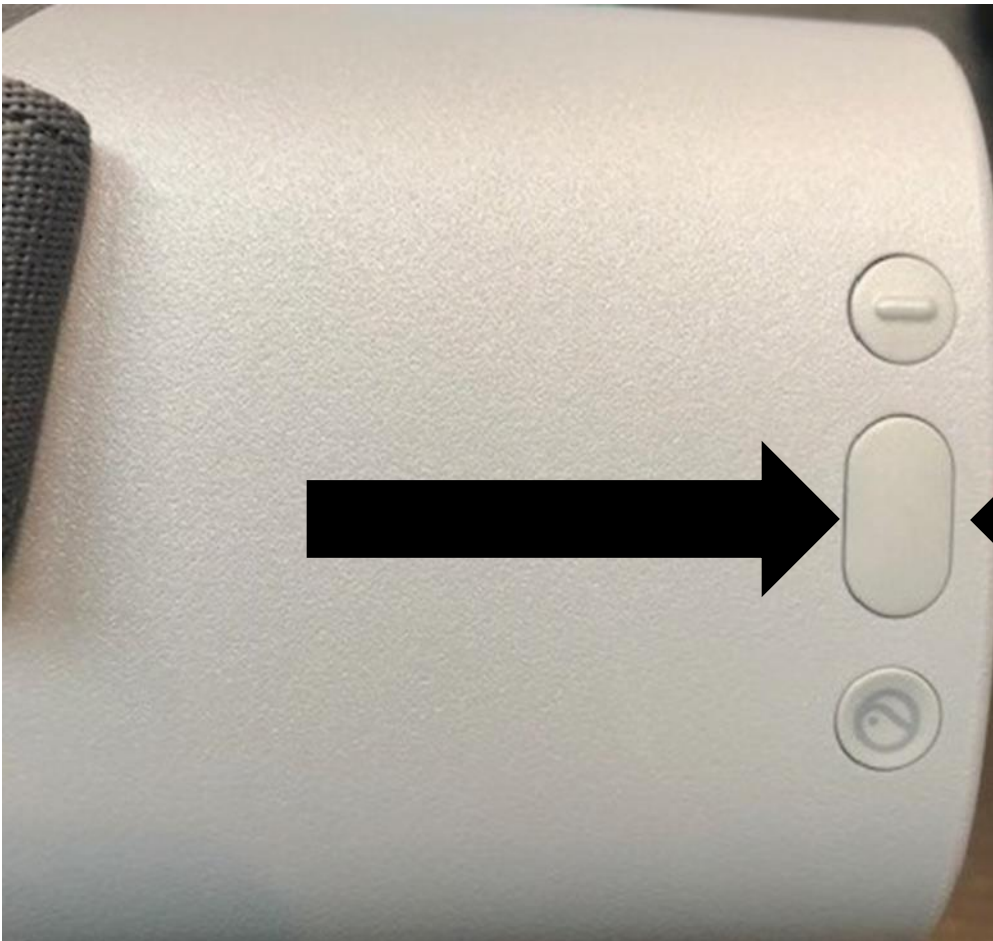
Using OCR-Text To Speech with e2

1. To use the OCR feature: Press and hold down the magnification button for 2 seconds. The OCR will automatically start.



E2 Menu

1. To access your e2 Menu: Press and hold down the contrast or middle button for 2 seconds



2. Once in the menu you have four options.

Vision (Brightness, Language)

OCR (Gender voice, Speed, Volume, Text Color, Highlight Color)

Settings (Where to set up WiFi)

Update

3. To access the Vision Menu please simply press the middle button/contrast.

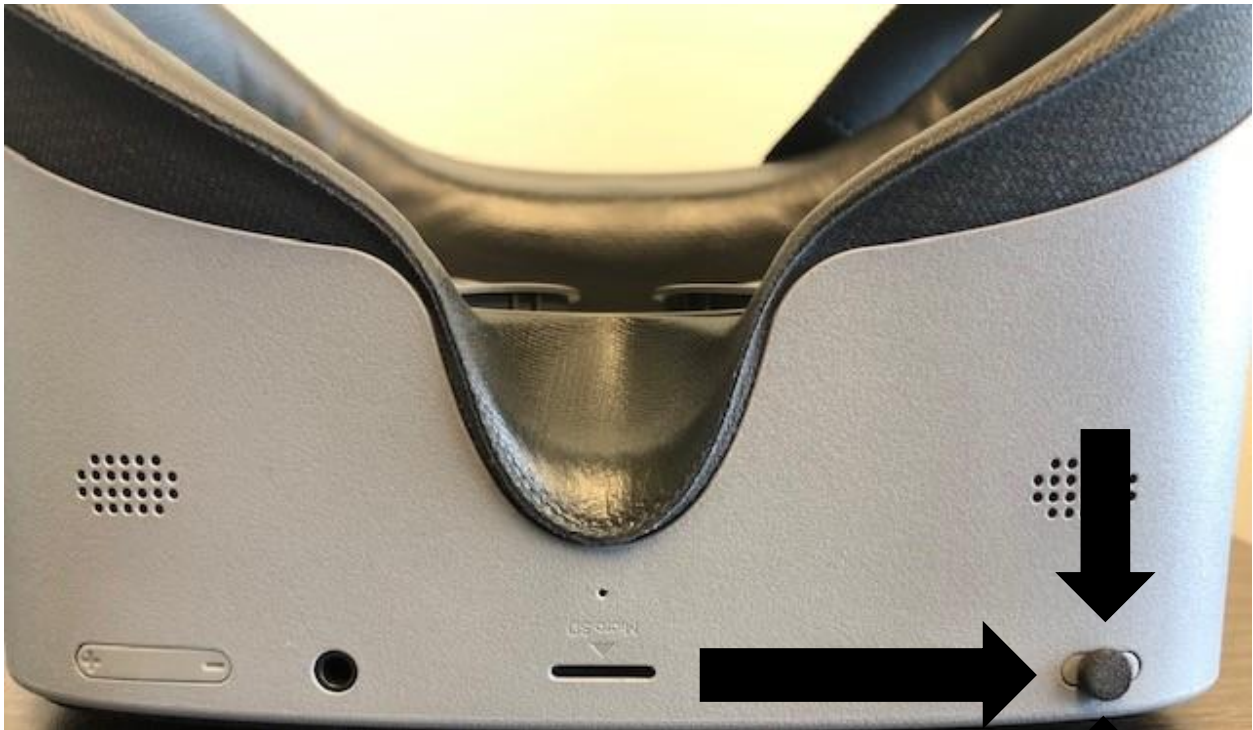
4. To select an option please simply press the top or magnification button.

5. To exit please hold the middle or contrast button for 2 seconds.

6. The same applies for all options

Turning OFF/ Powering Down Your e2

1. Simply press and hold the power button for 2 seconds. The Pico logo will appear and then screen will turn black indicating the device is off.



2. You can also simply lay down the device to go into “sleep mode”

Charging Your e2

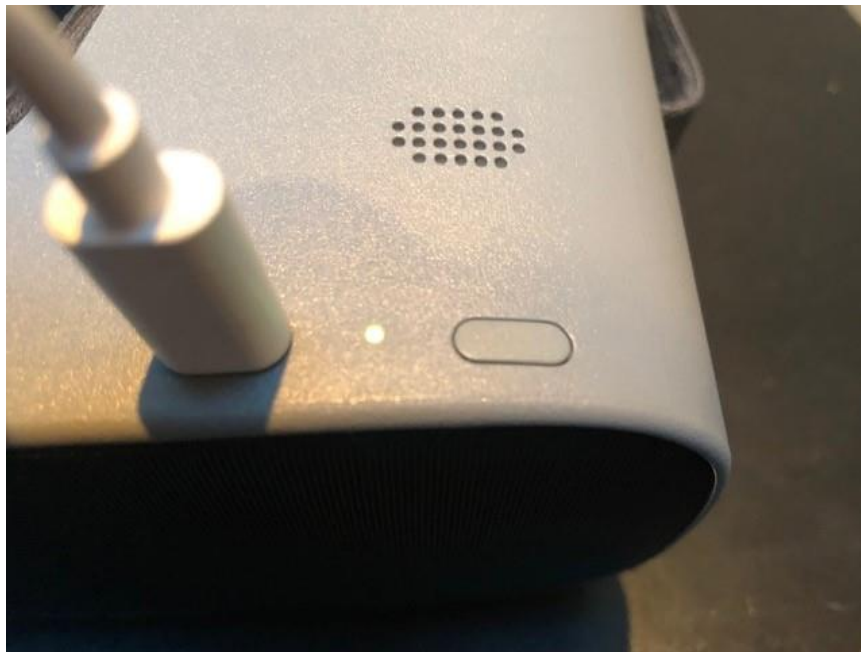
Simply plug your USB cord into the hole next to the power button.



Battery Life

3 to 8 hours (depending on use)

1. A light appears next to the charging plug indicating it is charging. (Red Light needs charge)



2. (Blue light, charging)(Forest green light, fully charged) (30min to 1 hour)
3. If you are not sure it is charging, please (quick press power button) look in screen, large white battery shows charging.

Technical Specifications

Display **3K**

CPU **Qualcomm Snapdragon 835**

Weight **268g**

Refresh rate **90hz**

Storage **64G**

Content **NuEyes e2 APP**

Tracking **3DOF**

Camera **1 RGB Camera**